

TAYLOR LAKE ESTATES REMINGTON DRIVE DRAINAGE IMPROVEMENTS

CITY OF TROY TROY, IL 62294

INDEX OF DRAWINGS

G1.0.....	COVER SHEET
C0.1.....	GENERAL NOTES, UTILITY CONTACTS, & ABBREVIATIONS
C1.1.....	SITE PLAN AND DRAINAGE PROFILE
C2.1.....	DETAILS
C2.2.....	DETAILS

ENGINEER



100 Lanter Court, Suite 1
Collinsville, IL 62234
Tel 618.345.2200

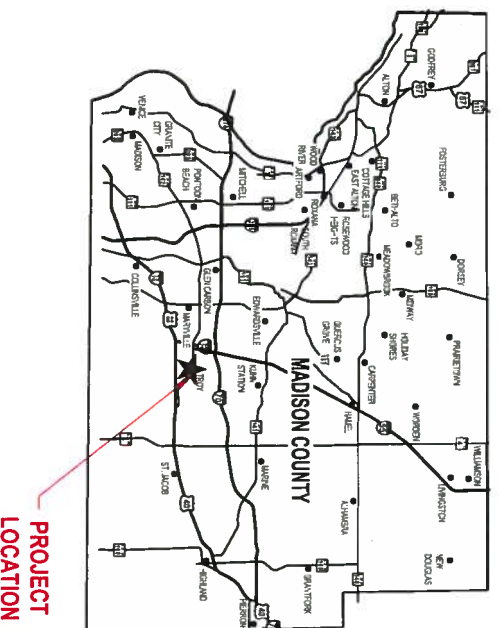
www.oatesassociates.com
ILLINOIS DESIGN FIRM LICENSE NO. 194.001115

COLLINSVILLE | ST. LOUIS | BELLEVILLE | ST. CHARLES

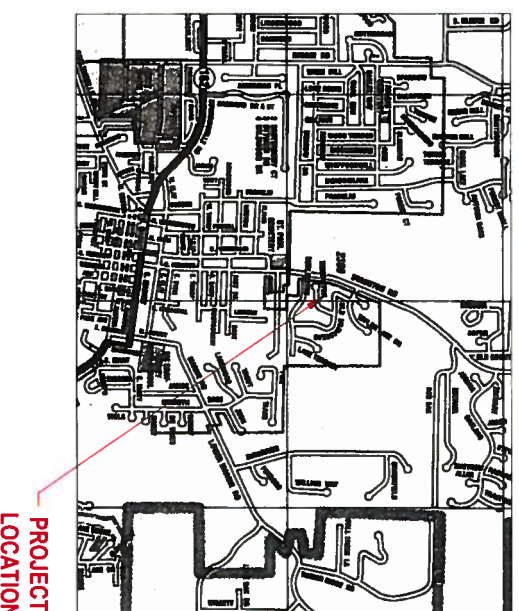


PROJECT MANAGEMENT & CIVIL ENGINEER
OATES ASSOCIATES, INC.
EASTPORT BUSINESS CENTER 1
100 LANTER COURT, SUITE 1
COLLINSVILLE, ILLINOIS 62234
CONTACT: TOM CISSSELL
PROJECT MANAGER
618.345.2200
Tom.Cissell@oatesassociates.com

VICINITY MAP



LOCATION MAP



AERIAL MAP



03/10/2017 - BID DOCUMENTS

ABBREVIATIONS

AD	ALGEBRAIC DIFFERENCE IN GRADE	DIA	DIAMETER	IN	INCHES	SEW	SEWER
ADJ	ADJACENT	DND	DO NOT DISTURB	INV	INVERT	SF	SQUARE FEET
AGG	AGGREGATE	DS	DOWN SPOUT	JB	JUNCTION BOX	SH	SHEET
AI	AREA INLET	DTL	DETAIL	K	LENGTH OF VERTICAL CURVE PER PERCENT GRADE DIFFERENCE	STA	STATION
ALT	ALTERNATE	E	EACH	LE	LINEAR FEET	STD	STANDARD
BC	BACK OF CURB	EA	EASING JOINT	MAT	MATERIAL	STM	STORM
BID	BUILDING	EJ	ELEVATION	MAX	MAXIMUM	SY	SQUARE YARD
BLD	BOLLARD	EL	ELEVATION	MECH	MECHANICAL	TA	TO BE ADJUSTED
BLRD	BENCHMARK	ELEC	ELECTRIC	ENGR	ENGINEER	TER	TO BE REMOVED
BM	BY OTHERS (USED IN CONJUNCTION WITH T&A & T&R)	ENGR	ENGINEER	MH	MANHOLE	TRBL	TO BE RELOCATED
BO	BY OTHERS (USED IN CONJUNCTION WITH T&A & T&R)	EOP	EDGE OF PAVEMENT	MIN	MINIMUM	TBY	TO BE VACATED
BYCE	BEGINNING OF VERTICAL CURVE	EQ	EQUAL	MISC	MISCELLANEOUS	TOE	TEMPORARY CONSTRUCTION
BVCS	BEGINNING OF VERTICAL CURVE STATION	ESMT	EASEMENT	N	NORTH	TEL	TELEPHONE
BW	BOTTOM OF WALL	ETR	EXISTING TO REMAIN	NF	NOW OR FORMERLY	THK	THICK
CAVY	CABLE TELEVISION	EVCE	END OF VERTICAL CURVE ELEVATION	NO	NOT IN CONTRACT	TYP	TYPICAL
CB	CATCH BASIN	EVCS	END OF VERTICAL CURVE STATION	NTS	NOT TO SCALE	TOP	TOP OF WALL
CI	CURB INLET	EXP	EXPANSION	OIC	OIL AND CHIP	TY	TYPE
CJ	CONTROL JOINT	FES	FLARED END SECTION	OC	ON CENTER	UPL	USE IN PLACE
CL	CENTERLINE	FF	FINISHED FLOOR	OD	OUTSIDE DIAMETER	UTL	UTILITIES
CLF	CHAIN LINK FENCE	FL	FLOW LINE	PERM	PERMANENT	VCP	VITRIFIED CLAY PIPE
CLP	CORRUGATED METAL PIPE	FO	FIBER OPTIC	PL	PROPERTY LINE	W	WIDTH OR WEST
CMU	CONCRETE MASONRY BLOCK	FT	FEET	PVC	POLYVINYL CHLORIDE PIPE	W/	WITH
CO	CLEANOUT	FV	FIELD VERIFY	PVI	POINT OF VERTICAL INTERSECTION	WO/	WITHOUT
COM	COMMUNICATIONS	GI	GRADE INLET	PWT	PAVEMENT	WR	WATER RESISTANT
CONC	CONCRETE	GND	GROUND	QTY	QUANTITY	WT	WEIGHT
CONST	CONSTRUCTION	HDP	HIGH DENSITY POLYETHYLENE	R	RADIUS	WTR	WATER
CP	CONTROL POINT	HMA	HOT-MIX ASPHALT	ROP	REINFORCED CONCRETE PIPE	WVF	WELDED WIRE FABRIC
CTR	CENTER	HT	HEIGHT	RD	ROAD	YD	YARD
CY	CUBIC YARD	HVAC	HEATING/VENTILATION/AIR CONDITIONING	ROW	RIGHT-OF-WAY	YL	YARD LIGHT
		ID	INSIDE DIAMETER	SAN	SANITARY		

UTILITY CONTACTS

THE FOLLOWING UTILITY COMPANIES MAY HAVE FACILITIES LOCATED WITHIN THE LIMITS OF CONSTRUCTION THAT MAY REQUIRE ADJUSTMENT, RELOCATION OR REMOVAL. ALL ARE MEMBERS OF JULIE, UNLESS NOTED OTHERWISE.

A&T (TELEPHONE) 203 GEORGE STREET COLLINSVILLE, IL 62234 (618) 346-6400	CITY OF TROY (WATER & SANITARY SEWER) 116 EAST MARKET STREET TROY, IL 62294 (618) 667-9924	IDOT (TRAFFIC SIGNALS & STREET LIGHTING) 1102 EASTPORT PLAZA DRIVE COLLINSVILLE, IL 62234 (618) 346-3110
CHARTER COMMUNICATIONS (CABLE TV) 815 CHARTER COMMONS TOWN & COUNTRY, MO 63017 (636) 387-6550	AMEREN (GAS & ELECTRIC) 2800 NORTH CENTER MARVILLE, IL 62062 (618) 346-1287	

NON-JULIE MEMBER: THE ILLINOIS DEPARTMENT OF TRANSPORTATION IS NOT A JULIE MEMBER. COSTS TO LOCATE THEIR FACILITIES WILL BE BY THE CONTRACTOR AND INCLUDED IN THE CONTRACT LUMP SUM COST.

THE ABOVE INFORMATION REPRESENTS THE BEST INFORMATION AVAILABLE TO THE OWNER AND IS ONLY INCLUDED FOR THE CONVENIENCE OF THE BIDDER. IT IS UNDERSTOOD AND AGREED THAT THE CONTRACTOR HAS TAKEN THE FOREGOING INTO CONSIDERATION IN PREPARING HIS/her BID, AND NO ADDITIONAL COMPENSATION WILL BE ALLOWED FOR ANY DELAYS OR INCONVENIENCE CAUSED BY SAME.

UNDERGROUND FACILITIES, STRUCTURES AND UTILITIES HAVE BEEN PLOTTED FROM AVAILABLE SURVEYS AND RECORDS. THEIR LOCATIONS MUST BE CONSIDERED TO BE APPROXIMATE ONLY. IT IS POSSIBLE THERE MAY BE OTHERS. THE EXISTENCE OF WHICH IS NOT PRESENTLY KNOWN OR SHOWN. IT IS THE CONTRACTOR'S RESPONSIBILITY TO DETERMINE THEIR EXISTENCE AND EXACT LOCATION AND TO AVOID DAMAGE THERETO. ILLINOIS LAW REQUIRES A MINIMUM 48-HOUR NOTICE TO ALL UTILITY COMPANIES BEFORE DIGGING. FIELD LOCATIONS OF UNDERGROUND FACILITIES MAY BE OBTAINED BY CALLING THE JULIE SYSTEM AT 800-892-0123 AND PROVIDING 48 HOURS ADVANCE NOTICE. NON-JULIE MEMBERS MAY BE CONTACTED DIRECT. AGENCIES KNOWN TO HAVE FACILITIES WITHIN THE PROJECT LIMITS ARE LISTED BELOW:

ANY FACILITIES OR APPURTENANCES WHICH ARE THE PROPERTY OF ANY PUBLIC UTILITY LOCATED WITHIN THE LIMITS OF CONSTRUCTION SHOULD BE RELOCATED OR ADJUSTED BY THEIR RESPECTIVE OWNERS. THE CONTRACTOR SHALL NOTIFY AND COOPERATE WITH THE OWNERS OF ANY SUCH FACILITY IN THEIR REMOVAL AND REARRANGEMENT OPERATIONS IN ORDER THAT THESE OPERATIONS AND THE CONSTRUCTION OF THIS PROJECT MAY PROGRESS IN A REASONABLE MANNER. ALL ROADSIDE OBJECTS (UTILITY POLES, FIRE HYDRANTS, SIGNS, ETC.) SHALL BE RELOCATED TO PROVIDE A MINIMUM OF 2 FEET CLEARANCE, MEASURED FROM THE FACE OF CURB TO THE NEAR EDGE OF THE OBJECT. THE COST OF ANY NECESSARY RELOCATIONS MAY BE INCURRED BY THE OWNER IF OTHER ARRANGEMENTS CANNOT BE MADE OR PRIOR AGREEMENTS ARE NOT IN PLACE.

JOINT UTILITY LOCATING INFORMATION FOR EXCAVATIONS
PHONE: 800-892-0123

NOTE: QUANTITIES HAVE BEEN ESTIMATED FOR REFERENCE PURPOSES ONLY AND NO WARRANTY IS MADE AS TO THE ACCURACY OF THESE ESTIMATES. THE CONTRACTOR SHALL COMPLETE ALL WORK NECESSARY TO CONSTRUCT THE PROJECT AS SHOWN ON THE PLAN SHEETS AND DETAILS REGARDLESS OF THE QUANTITIES ESTIMATED.

SUMMARY OF QUANTITIES

SECTION NUMBER	ITEM	UNIT	TOTAL QUANTITIES
202	EARTH EXCAVATION	CU YD	75
201	FENCE REMOVAL & REPLACEMENT	FOOT	180
209	TRENCH BACKFILL	CU YD	75
806	CONCRETE V GUTTER	LF	20
232	900	90 YD	200
201	ROP FLARED END SECTION 24"	EACH	1
590	HOPE STORM SEWER PIPE 24"	FOOT	181
002	INLET, TYPE B WITH TYPE B GRAVE	EACH	2
201	CONCRETE SWALE	LF	42
281	STONE PER R&P CLASS A3	90 YD	5
580	ROP STORM SEWER PIPE 24"	LF	25
201	CONSTRUCTION LAYOUT	EACH	1

GENERAL NOTES AND SPECIFICATIONS

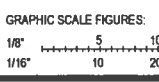
- GENERAL
- ALL SITE WORK SHALL BE IN ACCORDANCE WITH THE LATEST EDITION OF THE ILLINOIS DEPARTMENT OF TRANSPORTATIONS, "STANDARD SPECIFICATIONS FOR ROAD AND BRIDGE CONSTRUCTION" AND HIGHWAY STANDARDS", IN SO FAR THAT THEY APPLY, EXCEPT THAT ALL REFERENCES TO MEASUREMENT AND PAYMENT SHALL BE DELETED.
- THE GENERAL CONTRACTOR SHALL PROTECT AND CAREFULLY PRESERVE ALL PROPERTY MARKERS, MONUMENTS, SIGNS, EXISTING PAVEMENT, EXISTING CURB, AND EXISTING TREES FROM DAMAGE. IF ANY FEATURE IS TO REMAIN AND IS DAMAGED, IT WILL BE REPAIRED OR REPLACED BY THE GENERAL CONTRACTOR AT HIS/HER OWN EXPENSE AS DIRECTED BY THE ENGINEER.
- THE CONTRACTOR SHALL REMOVE TRAFFIC SIGNS WHICH INTERFERE WITH CONSTRUCTION OPERATIONS AND ERECT AT TEMPORARY LOCATIONS AND MAINTAIN THROUGHOUT THE CONSTRUCTION PERIOD, AS SOON AS CONSTRUCTION OPERATIONS WILL ALLOW. ALL SIGNS SHALL BE PERMANENTLY RELOCATED AS DIRECTED BY THE ENGINEER AT NO ADDITIONAL COST.
- ANY UNSUITABLE MATERIAL ENCOUNTERED DURING CONSTRUCTION SHALL BE REMOVED BY THE CONTRACTOR AND REPLACED WITH SUITABLE MATERIAL AS APPROVED BY THE ENGINEER. THE COST TO REMOVE AND REPLACE UNSUITABLE MATERIAL WILL BE CONSIDERED AN UNFORESEEN CONDITION AND WILL BE PAID FOR AS AN AGREED PRICE OR ON A TIME AND MATERIAL BASIS.
- THE CONTRACTOR SHALL PROVIDE THE NECESSARY SIGNS AND BARRICADES WHILE WORKING THROUGHOUT THE CONSTRUCTION PERIOD INCLUDING PLACING BARRICADES AT THE PROJECT ENTRANCES TO PREVENT PUBLIC ENTRY. ALL MATERIAL PILES, EQUIPMENT, OPEN EXCAVATIONS OR OTHER OBSTRUCTIONS OR HAZARDS TO MOTORISTS OR PEDESTRIANS SHALL BE ENCLOSED BY BARRICADES.
- CONSTRUCTION EQUIPMENT AND MATERIALS SHALL BE STORED ON THE PROPOSED CONSTRUCTION SITE AND NOT ON ANY PUBLIC STREET OR RIGHT OF WAY OUTSIDE THE DESIGNATED CONSTRUCTION ZONE.
- THE CONTRACTOR SHALL PROVIDE A STABILIZED CONSTRUCTION ENTRANCE AND INSTALL OTHER EROSION CONTROL ITEMS AS DIRECTED BY THE ENGINEER TO CONTROL SITE RUNOFF. THE ENGINEER MAY REQUEST EROSION CONTROL ITEMS NOT SHOWN ON THE PLANS AT NO ADDITIONAL COST TO THE CONTRACT WHEN STAGED OPERATIONS CREATE A TEMPORARY CONDITION THAT WOULD ALLOW OFF-SITE EROSION IF NOT CONTAINED.
- THE CONTRACTOR SHALL VERIFY ALL DIMENSIONS AND CONDITIONS IN THE FIELD, INCLUDING POTENTIAL UTILITY CONFLICTS - PRIOR TO ORDERING MATERIALS AND COMMENCING CONSTRUCTION.
- THE CONTRACTOR SHALL STAGE ALL WORK IN SUCH A WAY AS TO MAINTAIN INGRESS AND EGRESS TO ALL ADJUTING PROPERTIES AT ALL TIMES DURING CONSTRUCTION. THE COST OF ALL OTHER MATERIALS REQUIRED AND ALL OTHER LABOR NECESSARY TO COMPLY WITH THIS PROVISION WILL NOT BE PAID FOR SEPARATELY, BUT SHALL BE CONSIDERED AS INCLUDED IN THE UNIT BID PRICES OF THE CONTRACT.
- THE CONTRACTOR SHALL CONFINE ALL OPERATIONS TO THE CONSTRUCTION LIMITS LINE SHOWN ON THE PLANS. ANY AREA DISTURBED BEYOND THESE LIMITS SHALL BE RESTORED TO ITS ORIGINAL CONDITION AT THE CONTRACTOR'S EXPENSE.
- THE CONTRACTOR SHALL SOO ALL EARTH SURFACES DISTURBED BY CONSTRUCTION, SOO WITHIN THE CONSTRUCTION LIMITS AS PROVIDED IN THE CONTRACT. SOO OUTSIDE THESE LIMITS DUE TO CONSTRUCTION ENCROACHMENTS WILL NOT BE INCLUDED IN THE CONTRACT LUMP SUM PRICE AND WILL BE RESTORED TO ITS ORIGINAL CONDITION TO THE SATISFACTION OF THE ENGINEER AT NO ADDITIONAL COST TO THE CONTRACT.
- THE CONTRACTOR SHALL REMOVE ALL EXISTING ROADWAY FEATURES INCLUDING, BUT NOT LIMITED TO, PAVEMENT, CURB, SIDEWALK, DRIVEWAY PAVEMENT, CULVERTS, HEADWALLS, RIPRAP, FENCING, RETAINING WALLS, WHICH INTERFERE WITH THE PROPOSED CONSTRUCTION UNLESS NOTED OTHERWISE ON THE PLANS. ALL FEATURES WHICH ARE TO BE REMOVED AND FOR WHICH THERE IS NO SPECIFIC CALLOUT, WILL NOT BE MEASURED SEPARATELY FOR PAYMENT AND THE COST OF THIS REMOVAL WORK SHALL BE CONSIDERED AS INCLUDED IN THE CONTRACT LUMP SUM PRICE.

DRAINAGE

- STORM SEWER INVERTS SHOWN ON THE PLANS HAVE BEEN CALCULATED TO THE CENTER OF THE STRUCTURE. THE STORM SEWER SLOPES SHOWN ON THE PLANS ARE THE PERCENT GRADE FROM CENTER TO CENTER OF STRUCTURE. THE LENGTH OF STORM SEWERS SHOWN ON THE PLANS IS THE DISTANCE FROM CENTER TO CENTER OF STRUCTURE. FLARED END SECTIONS ARE LOCATED BY STATION, OFFSET AND FLOWLINE ELEVATION AT THE FLARED END OF THE FLARED END SECTION.
- THE CONTRACTOR SHALL TAKE WHATEVER PRECAUTIONS ARE NECESSARY TO PROTECT THE EXISTING DRAINAGE ITEMS OR STRUCTURES FROM DAMAGE DURING THE SOIL MODIFICATION PROCESS. IN THE EVENT THAT PIPES ARE DAMAGED, THEY SHALL BE REPAIRED OR REPLACED TO THE SATISFACTION OF THE ENGINEER. ALL COSTS INCURRED TO REPAIR OR REPLACE DAMAGED PIPES SHALL BE AT THE CONTRACTOR'S EXPENSE.
- THE CONTRACTOR SHALL INCLUDE THE COST OF MAKING CONNECTIONS TO EXISTING DRAINAGE STRUCTURES IN THE CONTRACT LUMP SUM PRICE.
- ALL DRAINAGE STRUCTURES CONSTRUCTED, ADJUSTED OR RECONSTRUCTED UNDER THE CONTRACT, SHALL BE CLEANED OF ANY ACCUMULATION OF SILT, DEBRIS OR FOREIGN MATTER AT THE END OF EACH WORKING DAY AND AT THE TIME OF FINAL INSPECTION. THE COST OF THIS WORK WILL NOT BE PAID FOR SEPARATELY, BUT SHALL BE CONSIDERED AS INCLUDED IN THE CONTRACT LUMP SUM FOR THE VARIOUS DRAINAGE STRUCTURE ITEMS INCLUDED IN THE CONTRACT.

LINE TYPES

EXISTING (EX)	NEW (NEW)
— W —	— W —
— G —	— G —
— T —	— T —
— OE —	— OE —
— E —	— E —
— FO —	— FO —
— X —	— X —
— 500 —	— 500 —
— 300 —	— 300 —



NO.	DATE	REMARKS

100 Lanier Court, Suite 1
Collinsville, IL 62234
tel 618.345.2200
www.ontseassociates.com
ILLINOIS DESIGN FIRM LICENSE NO. 184.001115

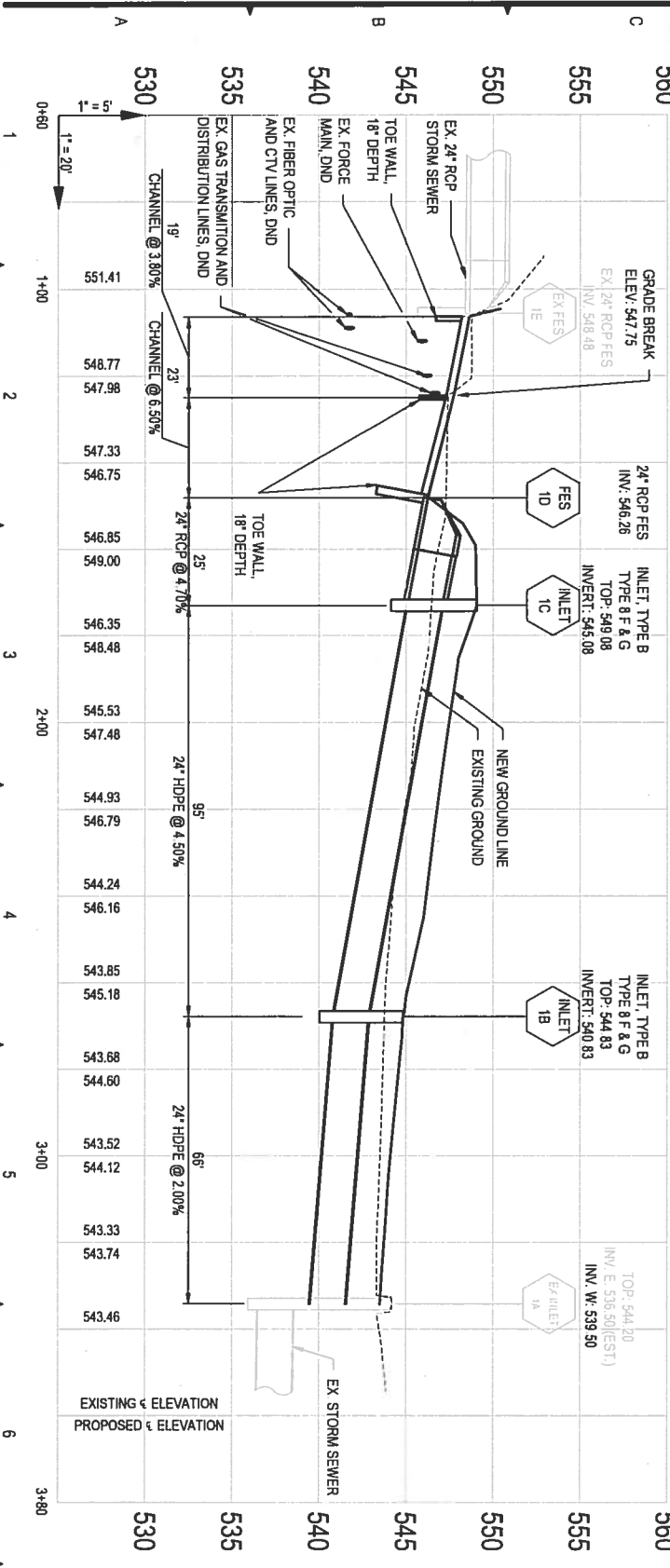
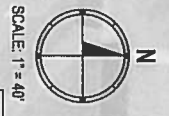
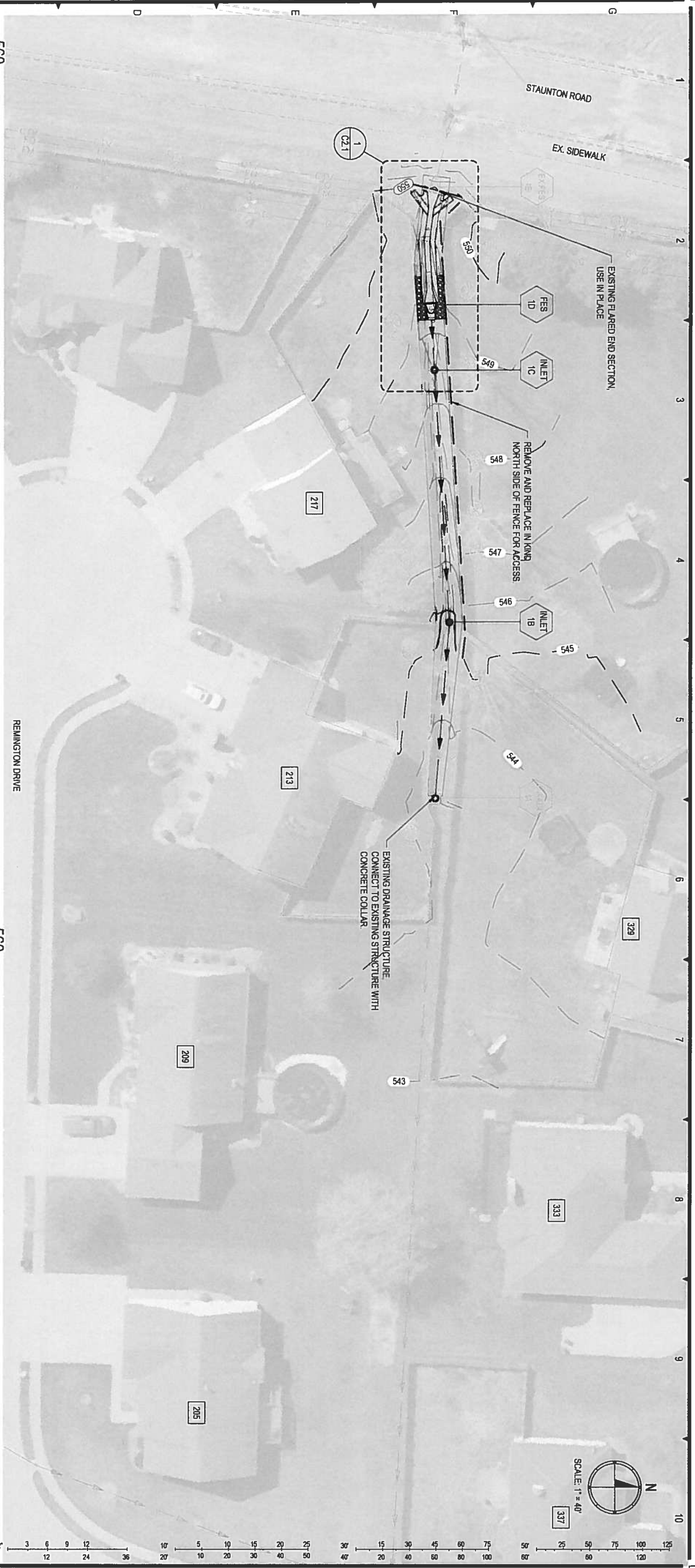
WATER ASSOCIATES
COLLINSVILLE | ST. LOUIS | BELLEVILLE | ST. CHARLES

TAYLOR LAKE ESTATES
REMINGTON DRIVE
DRAINAGE IMPROVEMENTS
GENERAL NOTES, UTILITY CONTACTS, &
ABBREVIATIONS



PROJECT NO.: 15062.003
DATE: 03/10/17
SHEET NO.: CO.1

COMPILED 2017 BY CIVITAS ASSOCIATES



- GENERAL NOTES:**
1. DAYLIGHT EXISTING DRAINS INTO PROPOSED SWALE ABOVE NEW STORM SEWER.
 2. REMOVE AND REPLACE IN KIND NORTH SIDE OF FENCE AS NECESSARY FOR ACCESS.
 3. SOD ALL DISTURBED AREAS.
 4. SEE DETAIL 5, SHEET C2.1 FOR STORM SEWER PIPE INSTALLATION
 5. SEE DETAIL 1, SHEET C2.1 FOR FLARED END SECTION
 6. SEE DETAIL 2, SHEET C2.2 FOR INLET TYPE B
 7. SEE DETAIL 3, SHEET C2.2 FOR TYPE B GRATE

EARTHWORK COMPUTATIONS

	CUT (CY)	FILL (CY)	NET (CY)
SITE (5% SHRINKAGE)	9	38	-30
STORM SEWER	86		86
TOTAL			= 56 CY EXCESS



REVISIONS:

NO.:	DATE:	REMARKS:



100 Lanter Court, Suite 1
 Collinsville, IL 62234
 tel 618.345.2200
 www.gatesassociates.com
 ILLINOIS DESIGN FIRM LICENSE NO. 184.001115

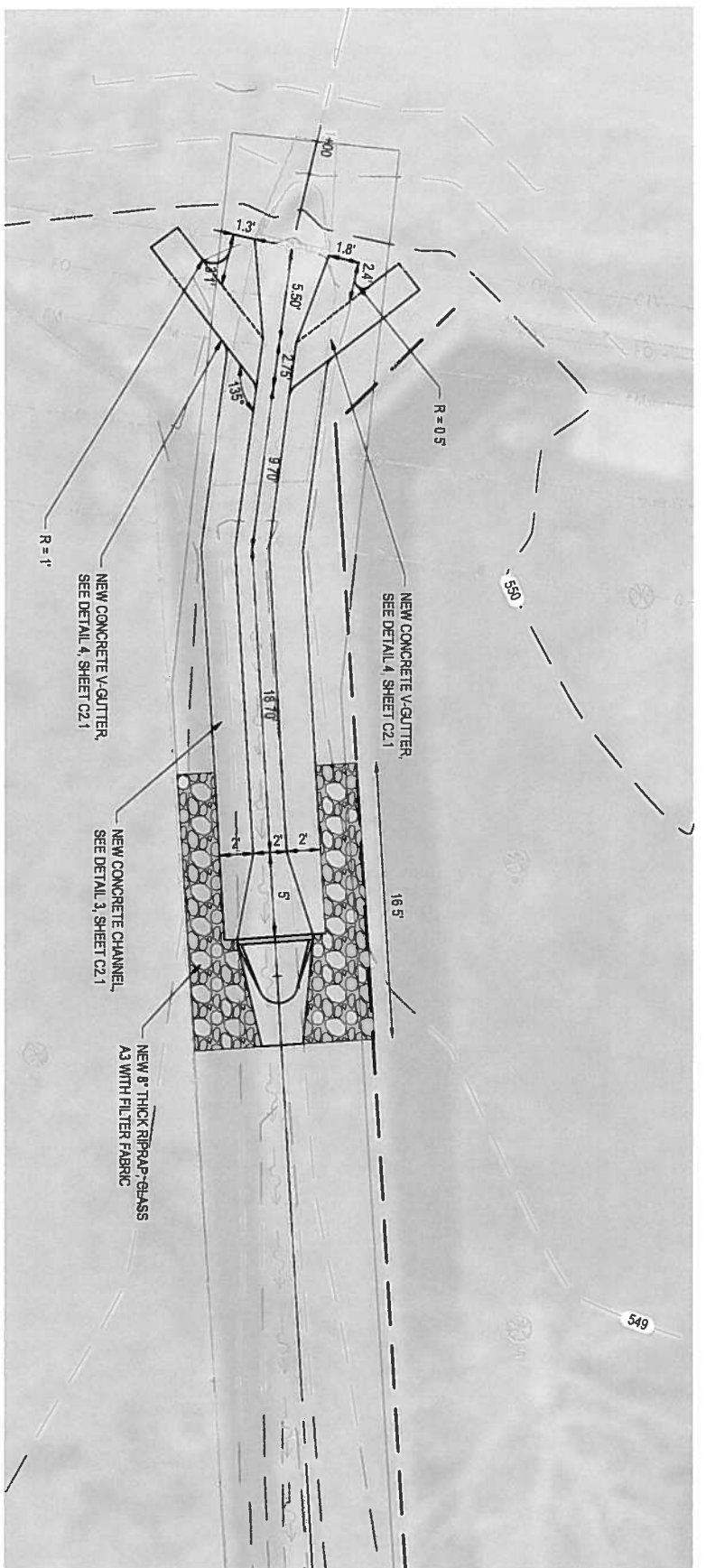
**TAYLOR LAKE ESTATES
 REMINGTON DRIVE
 DRAINAGE IMPROVEMENTS
 SITE PLAN AND DRAINAGE PROFILE**



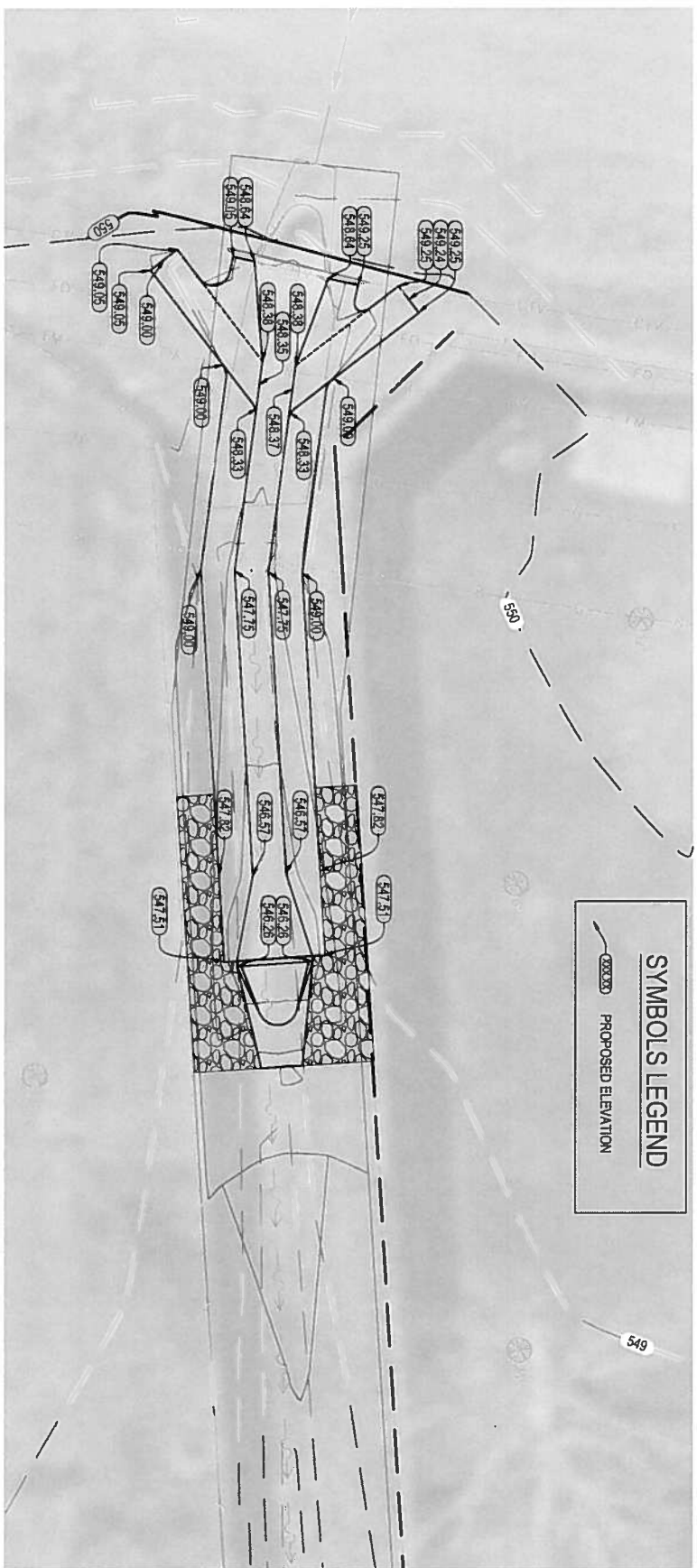
PROJECT NO.: 15062.003
 DATE: 03/10/17

SHEET NO.: 03/10/17

C1.1

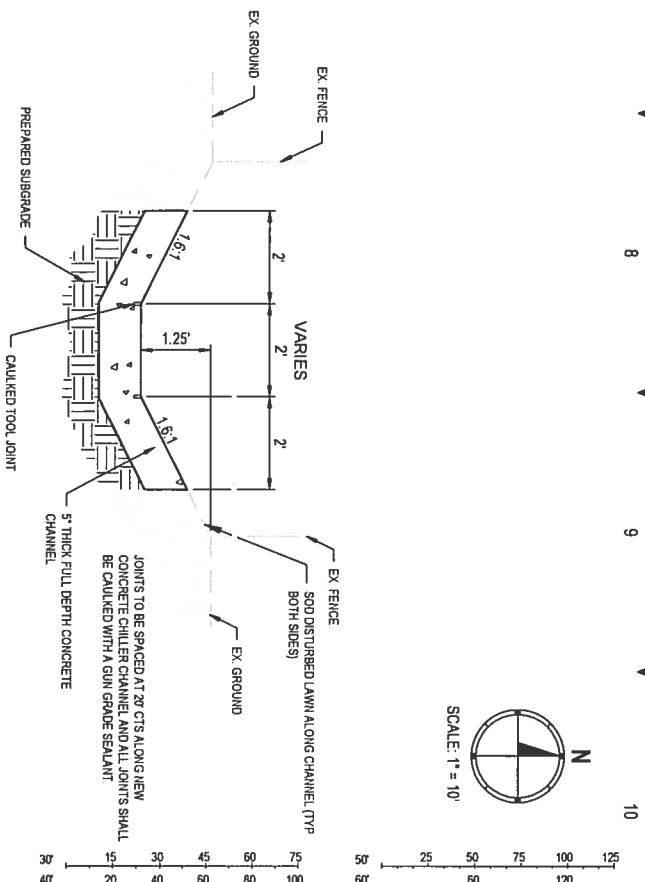


1 CHANNEL PLAN
SCALE: NOT TO SCALE

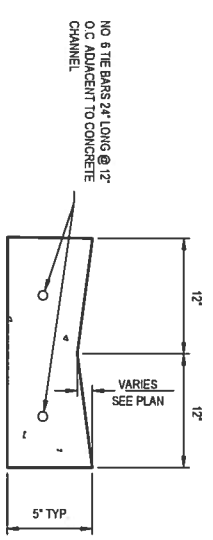


2 ELEVATION PLAN
SCALE: NOT TO SCALE

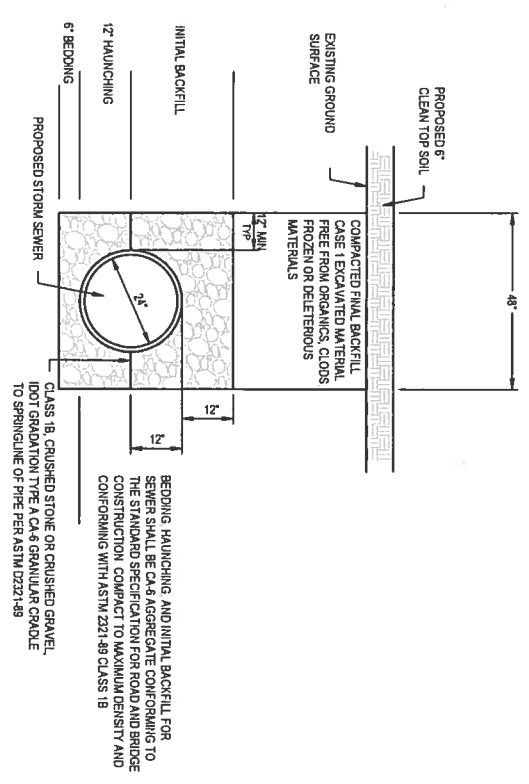
SYMBOLS LEGEND
 PROPOSED ELEVATION



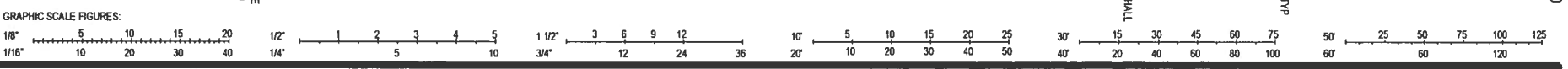
3 NEW CONCRETE CHANNEL DETAIL
SCALE: NOT TO SCALE



4 CONCRETE "V" GUTTER DETAIL
SCALE: NO SCALE



5 STORM SEWER INSTALLATION DETAIL
SCALE: NO SCALE



REVISIONS:		
NO.:	DATE:	REMARKS:

100 Lanier Court, Suite 1
 Collinsville, IL 62234
 tel 618.345.2200
 www.collinsvilleassociates.com
 ILLINOIS DESIGN FIRM LICENSE NO. 154.001115
GATES ASSOCIATES
 COLLINSVILLE | ST. LOUIS | BELLEVILLE | ST. CHARLES

TAYLOR LAKE ESTATES
 REMINGTON DRIVE
 DRAINAGE IMPROVEMENTS
 DETAILS



PROJECT NO.: 15062.003
 DATE: 03/10/17

SHEET NO.: C2.1

2 ELEVATION PLAN
SCALE: NOT TO SCALE

1 CHANNEL PLAN
SCALE: NOT TO SCALE

3 NEW CONCRETE CHANNEL DETAIL
SCALE: NOT TO SCALE

4 CONCRETE "V" GUTTER DETAIL
SCALE: NO SCALE

5 STORM SEWER INSTALLATION DETAIL
SCALE: NO SCALE

GRAPHIC SCALE FIGURES:

1/8" = 1'-0"

1/16" = 1'-0"

1 1/2" = 12'-0"

3/4" = 6'-0"

1/4" = 2'-0"

1/2" = 4'-0"

1/8" = 1'-0"

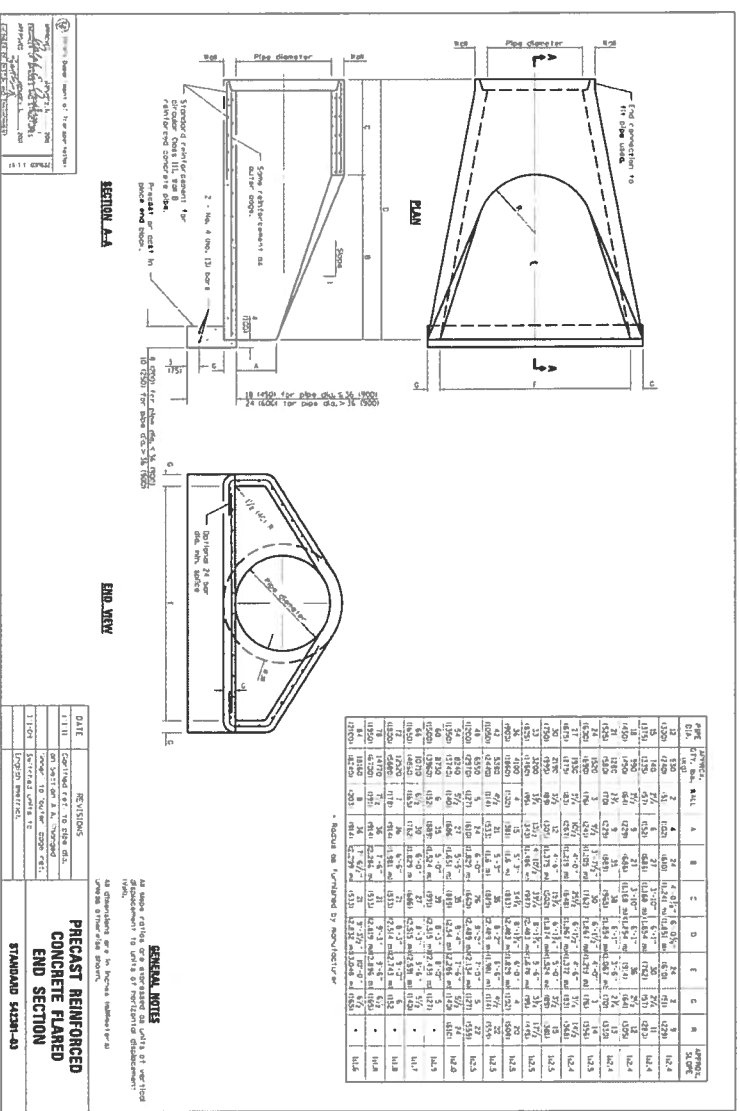
1/16" = 1'-0"

1/2" = 4'-0"

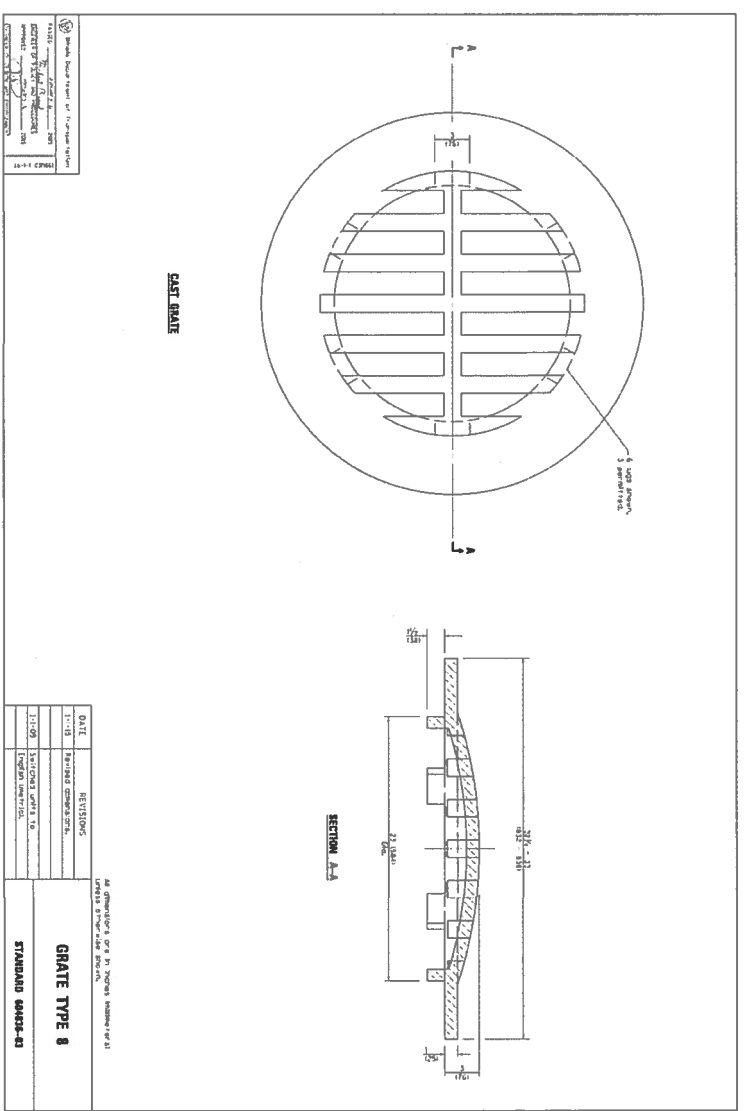
1/4" = 2'-0"

1/8" = 1'-0"

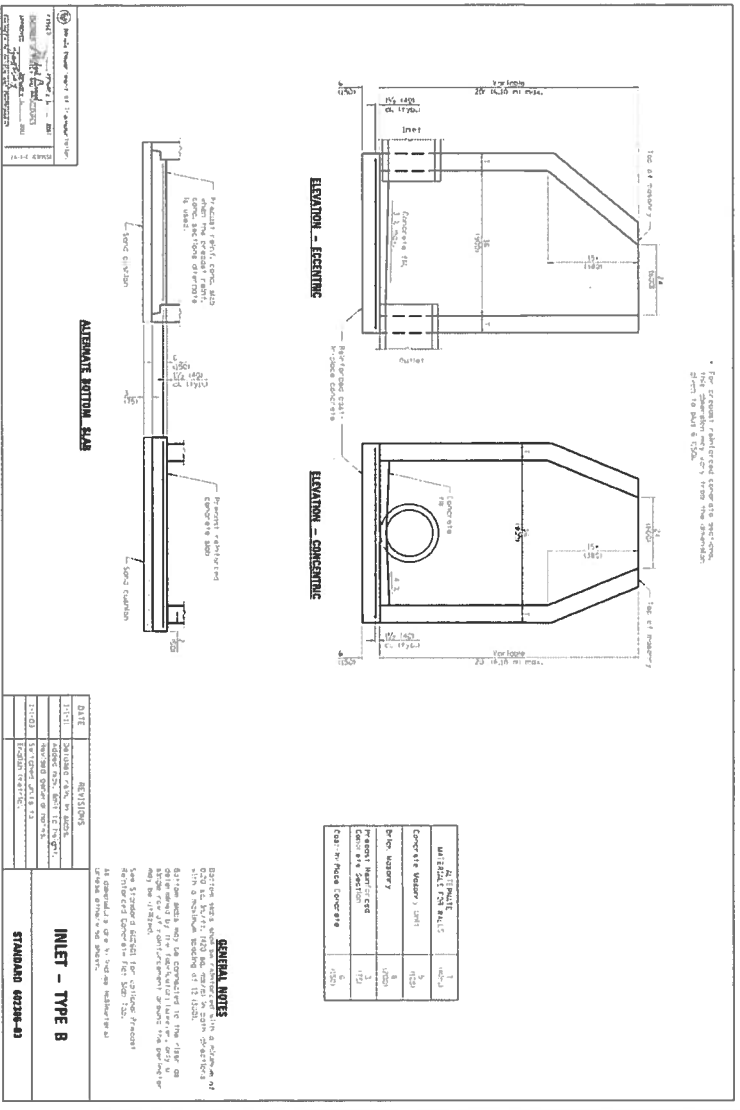
1/16" = 1'-0"



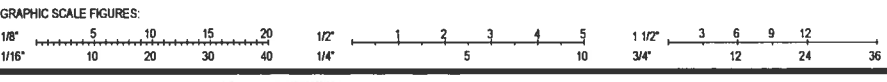
1 FLARED END SECTION DETAIL
SCALE: NO SCALE



3 GRATE TYPE 8
SCALE: NO SCALE



2 INLET - TYPE B
SCALE: NO SCALE



NO.	DATE	REMARKS

GATES ASSOCIATES

100 Lanter Court, Suite 1
Collinsville, IL 62234
tel/ 618.345.2200

www.gatesassociates.com

ILLINOIS DESIGN FIRM LICENSE NO. 184.001115

COLLINSVILLE | ST. LOUIS | BELLEVILLE | ST. CHARLES

TAYLOR LAKE ESTATES
REMINGTON DRIVE
DRAINAGE IMPROVEMENTS
DETAILS



PROJECT NO.: 15062.003
DATE: 03/10/17
SHEET NO.: 3 of 17

C222